

# Upgrading to Backup Exec 2010

PowerVault DL Backup to Disk Appliance



## Executive Summary

With its initial release, the PowerVault DL Backup to Disk Appliance was integrated with Backup Exec 12.5. Starting March 15th, 2010, PowerVault DL Backup to Disk customers who are current on their Symantec Essential Support will be eligible to upgrade to Backup Exec 2010. Backup Exec 2010 introduces exciting new features such as Data Deduplication, File and Email Archiving, and enhanced virtual machine protection. For more details on these new features please visit <http://www.dell.com/dl2000> or <http://www.backupexec.com>.

## Upgrade Notification

Dell PowerVault DL Backup to Disk Appliance powered by Symantec Backup Exec 12.5 customers who have a valid Essential Support agreement with Symantec are entitled to upgrade to Backup Exec 2010. Customers will be able to upgrade to Backup Exec 2010 and upgrade the specific agents and options that are covered by their support agreement. New features introduced in Backup Exec 2010 such as the Deduplication Option and Archiving Option requires a new purchase of these features if they are to be deployed with Backup Exec 2010. The upgrade process is summarized in the following steps:

1. Customers who have registered their Backup Exec 12.5 license keys and maintenance agreements with Symantec will receive a version upgrade notification letter with their Backup Exec 2010 license keys and instructions for obtaining Backup Exec 2010 installation media. The upgrade notifications will be sent over a 3-4 week period beginning March 15th, 2010.
2. Using the information contained in the version upgrade letter, customers will be able to download the Backup Exec 2010 installation media from the website specified in the letter.
3. Customers should also register their new Backup Exec 2010 license keys with the Symantec Licensing Portal via <http://licensing.symantec.com>.
4. Once the keys and installation media have been obtained, proceed to the installation instructions below.

If you did not receive your version upgrade notification by April 2010, contact Symantec Customer Care for your region. Customer Care contact information can be found at:

[http://www.symantec.com/business/support/assistance\\_care.jsp](http://www.symantec.com/business/support/assistance_care.jsp)

**Note:** Backup Exec 2010 will not accept Backup Exec 12.5 license keys

## About the Storage Provisioning Option license

The Backup Exec Storage Provisioning Option (SPO) enables Backup Exec to configure, monitor and manage disks and disk arrays connected to the PowerVault DL Backup to Disk Appliance. SPO has the ability to automatically configure disks for backup to disk operations and NEW deduplication capabilities in Backup Exec 2010. Note that deduplication requires the Backup Exec 2010 Deduplication Option.



Symantec Corporation World Headquarters  
20330 Stevens Creek Blvd., Cupertino, CA 95014 USA  
+1 (408) 517 8000 / +1 (800) 721 3934  
[www.symantec.com](http://www.symantec.com)

Backup Exec 12.5 Storage Provisioning Option – The Storage Provisioning Option enables the configuration, monitoring and management of disks attached to the PowerVault DL Backup to Disk Appliance for backup and restore operations. There are no restrictions on the number of external disks or disks enclosures that can be configured using SPO. When upgrading to Backup Exec 2010, Backup Exec 12.5 Storage Provisioning Option licenses are mapped to Backup Exec 2010 Storage Provisioning Option Unlimited license keys. See description below for information on the Unlimited license key.

Backup Exec 2010 Storage Provisioning Option Basic – The Backup Exec 2010 Storage Provisioning Option Basic license key only supports the configuration, monitoring and management of disks internal to the PowerVault DL Backup to Disk Appliance head unit. If additional disks in the form of external disk arrays are attached to the PowerVault DL Backup to Disk Appliance, the Backup Exec 2010 Storage Provisioning Option Unlimited license key is required to configure, monitor, and manage these external disk arrays.

Backup Exec 2010 Storage Provisioning Option Unlimited – The Backup Exec 2010 Storage Provisioning Option Unlimited license key supports the configuration, monitoring and management of disks internal to the PowerVault DL Backup to Disk Appliance head unit and disks in the form of external disk arrays attached to the PowerVault DL Backup to Disk Appliance.

### Upgrading to Backup Exec 2010

**IMPORTANT NOTE:** During the Backup Exec 12.5 to Backup Exec 2010 upgrade on the Dell DL2xxx system, do not run the Dell™ PowerVault™ DL Backup to Disk Appliance Console.

Perform the following steps to upgrade the PowerVault DL Backup to Disk Appliance to Backup Exec 2010:

1. Insert the Backup Exec 2010 DVD into the PowerVault DL Backup to Disk Appliance
2. The DVD will autorun and prompt for a language selection to continue. Select the desired language and press Ok to continue.
3. The Backup Exec 2010 DVD Browser appears.



Symantec Corporation World Headquarters  
20330 Stevens Creek Blvd., Cupertino, CA 95014 USA  
+1 (408) 517 8000 / +1 (800) 721 3934  
[www.symantec.com](http://www.symantec.com)

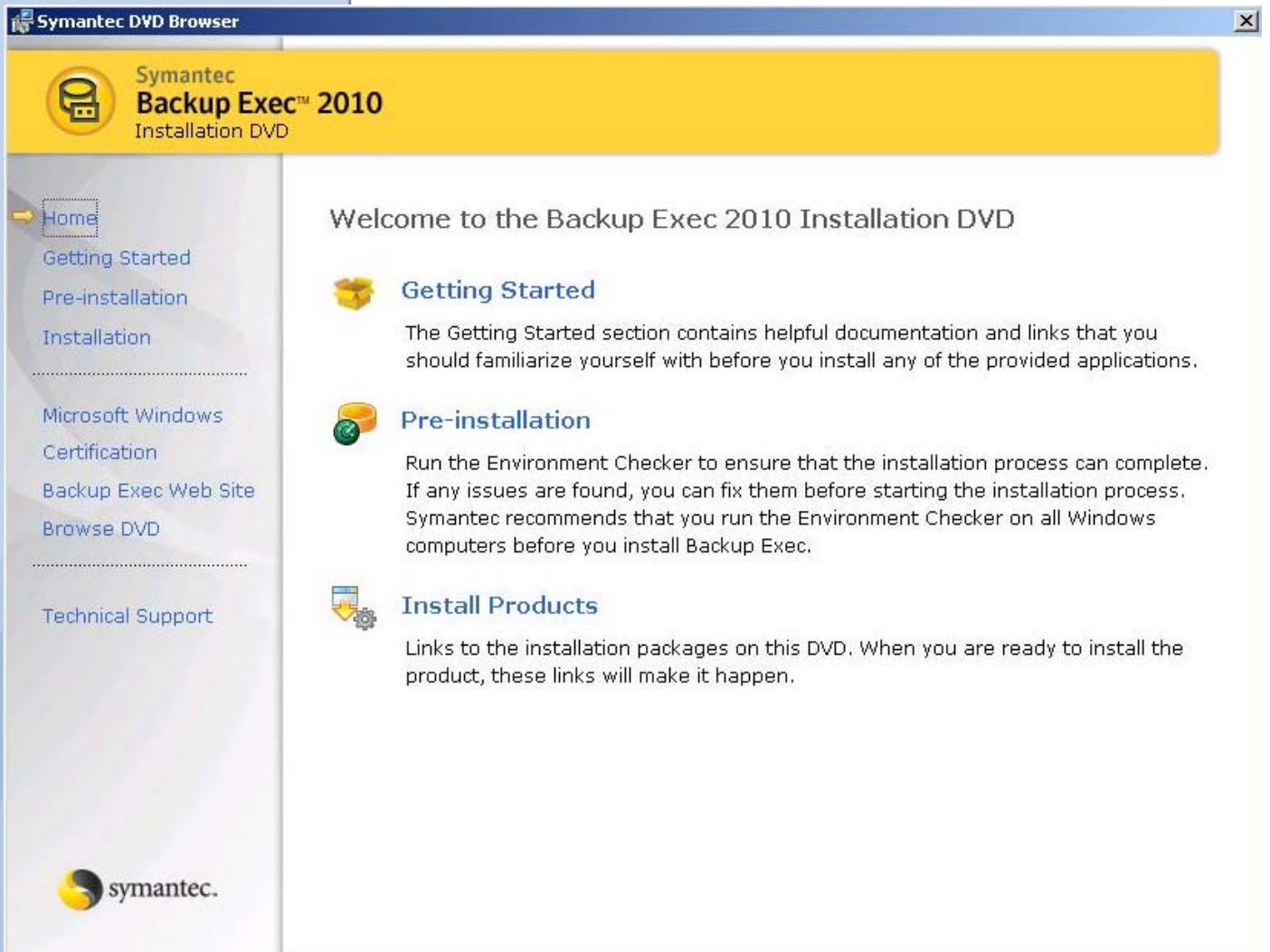
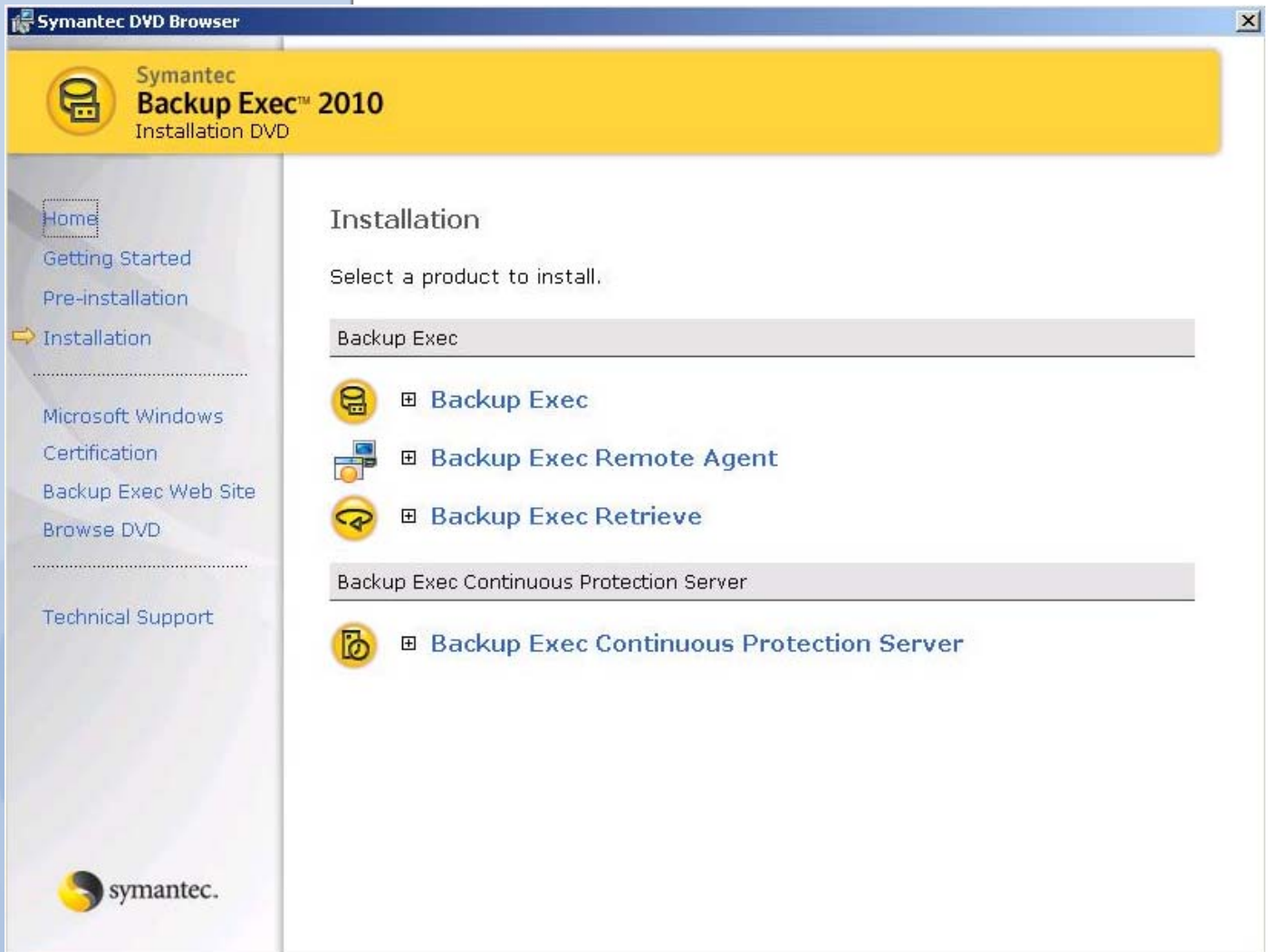


Figure: Backup Exec 2010 DVD Browser

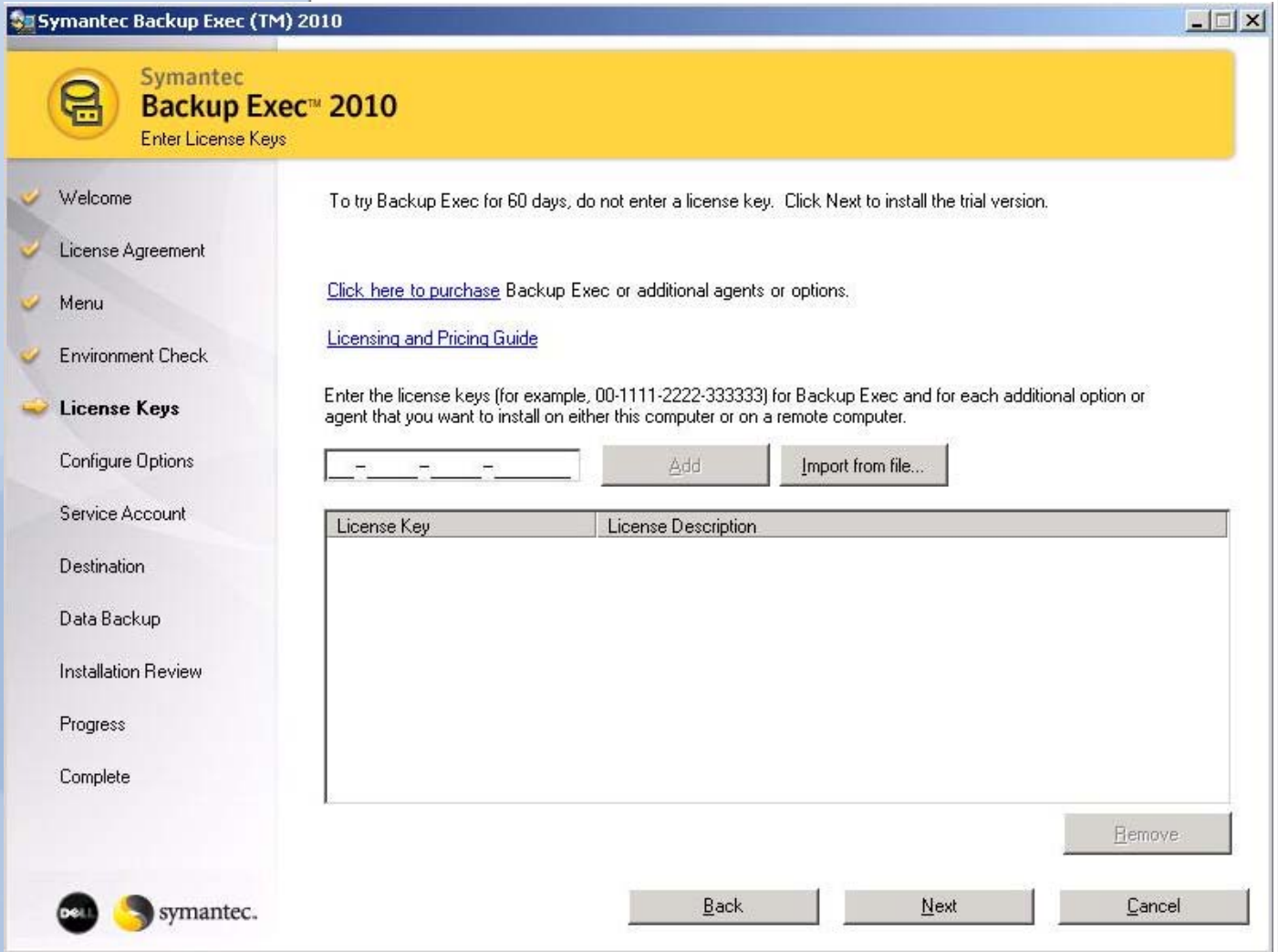
4. Select Install Products and the Product Installation screen appears.



**Figure: Product Installation Screen**

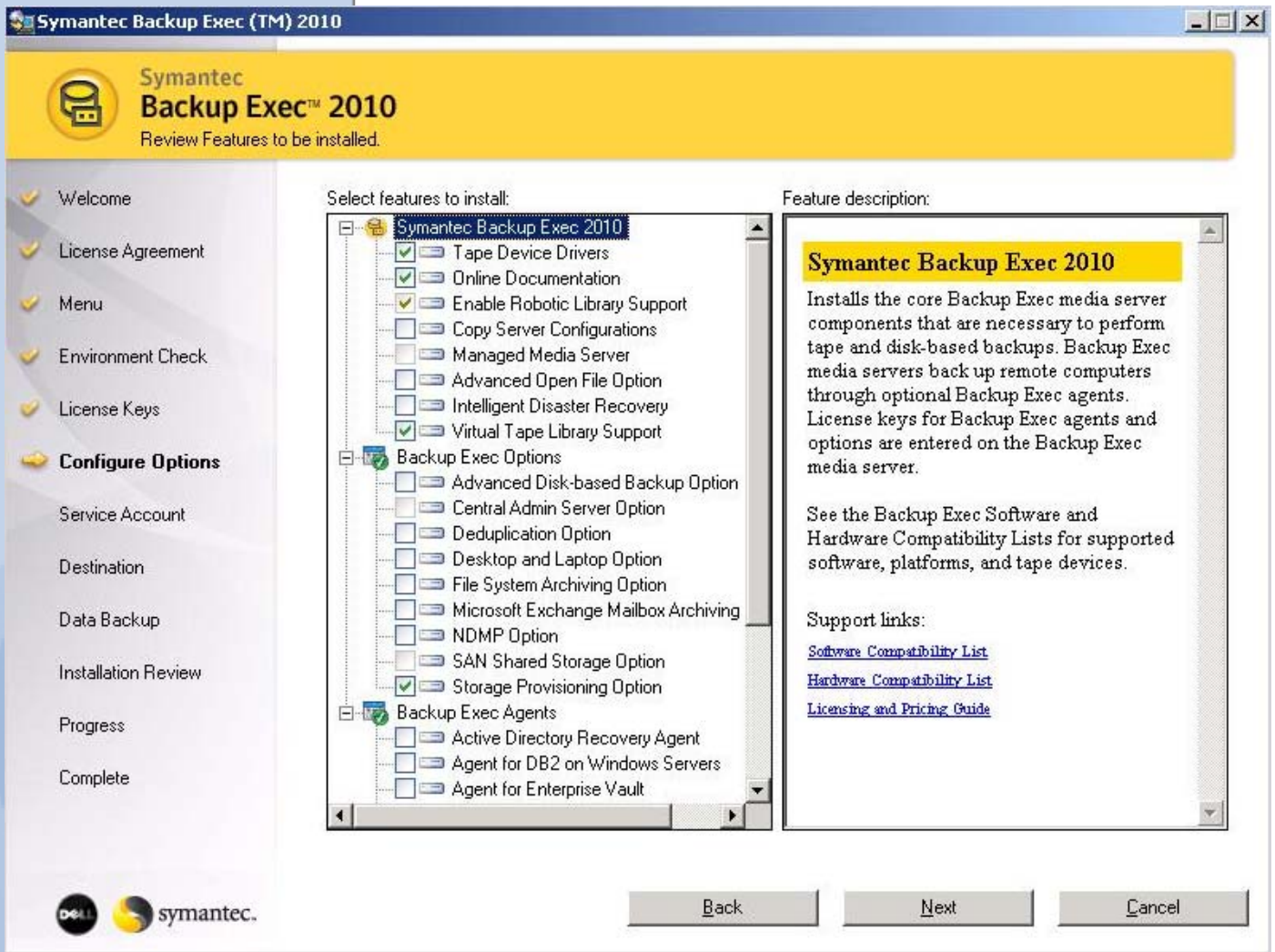
5. Select Backup Exec and the Backup Exec 2010 Installation wizard appears. Select Next to continue.
6. Read the Backup Exec 2010 End User License Agreement and select "I agree to the terms of the license agreement". Select Next to continue.
7. Since this is a local installation, Select Local Install and Install Backup Exec software options. Select Next to continue.
8. The Backup Exec Environment Check will run to check the installation pre-requisites. Correct any items marked with a Red X. Once all items have been checked, select Next to continue.
9. The Backup Exec licensing screen appears. Locate your Backup Exec 2010 license keys and enter them. The Backup Exec 2010 license keys were received as part of the version upgrade notification. Select Next to

continue.



**Figure: Backup Exec Licensing Screen**

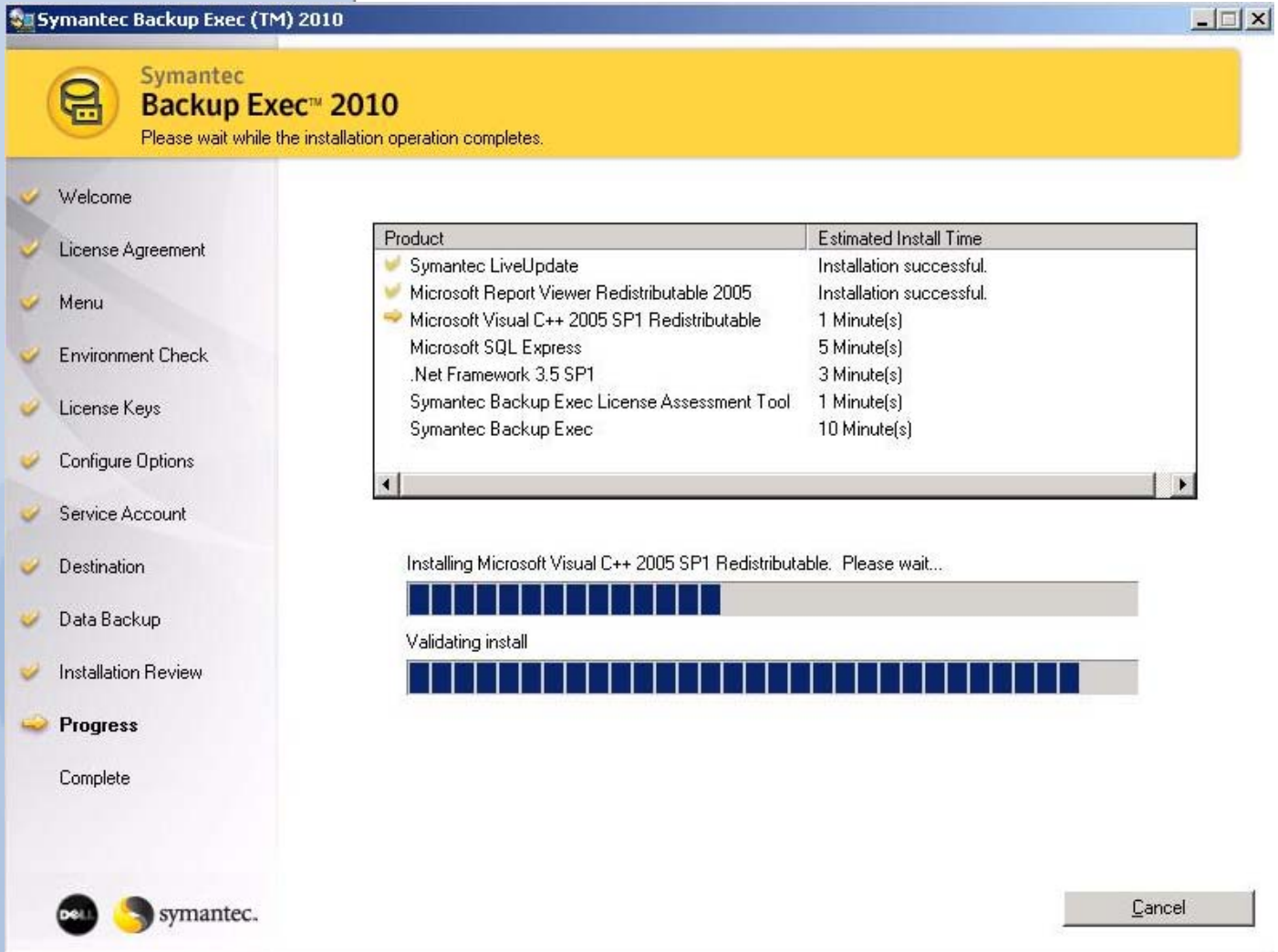
10. The Backup Exec Configuration Options appears. Verify that each option that you have entered a license key for will be installed. Also verify that the Storage Provisioning Option is selected for install. Select Next to continue.



**Figure: Backup Exec Configure Options**

11. Specify the service account and credentials for Backup Exec 2010 to use. This should be the same service account specified for Backup Exec 12.5. Select Next to continue.
12. Specify the location for the Backup Exec installation. It is recommended that you keep the default location. Select Next to continue.
13. As part of the install, Backup Exec 2010 will make a backup copy of the Backup Exec 12.5 settings found on the system. Specify the location to store the backup settings. It is recommended that you keep the default location. Select Next to continue.
14. Review the Backup Exec Installation Summary to verify your selections. Select Next to continue and start the upgrade process.

15. The Backup Exec Installation Progress appears. The upgrade process takes approximately 10 to 15 minutes.



**Figure: Backup Exec Installation Progress**

16. When the upgrade completes, an upgrade summary appears. Review the upgrade summary and select Next to continue.

17. Review the final installation screen. Select Next to continue.

18. The upgrade process is complete.



Symantec Corporation World Headquarters  
20330 Stevens Creek Blvd., Cupertino, CA 95014 USA  
+1 (408) 517 8000 / +1 (800) 721 3934  
[www.symantec.com](http://www.symantec.com)